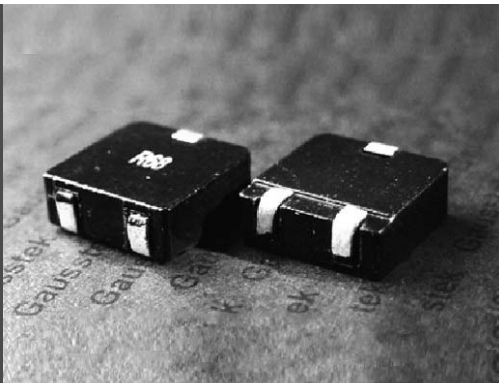


SMD POWER INDUCTORS

Series RP - 3



FEATURES

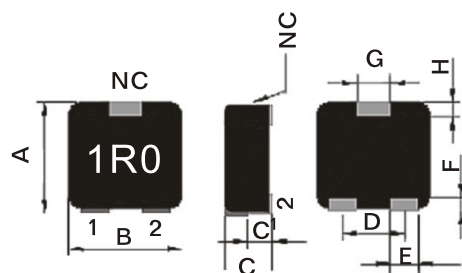
- ◆ Lowest height in this package footprint.
- ◆ Shielded construction.
- ◆ Lowest DCR/ μ H, in this package size.
- ◆ Handles high transient current spikes without saturation.
- ◆ Ultra low buzz noise, due to composite construction.
- ◆ Frequency up to 5MHz.
- ◆ The products contain no lead and also support lead-free soldering.

PRODUCT IDENTIFICATION

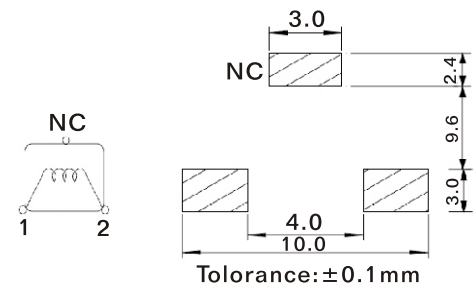
RP 13 3 50 O M 680N
a b c d e f g

- a : Type of products - Super Power Inductors
 b : Dimension (mm) - 13 = 13.9X13.9
 c : Design code - Number of Pad
 d : Thickness (mm) - 50 = 5.3
 e : Packing - PCS / REEL - O = 600
 f : Tolerance - M : $\pm 20\%$
 g : Inductance - 680N = 0.68 μ H

SHAPES & DIMENSIONS



Recommended PC Board Pattern



Parts	A(max)	B(max)	C(max)	C'(Typ)	D(± 0.5)	E(± 0.5)	F(± 0.5)	G(± 0.5)	H(± 0.5)
RP13350	13.9	13.9	5.3	2.0	7.0	2.0	2.2	2.5	1.7

ELECTRICAL SPECIFICATIONS

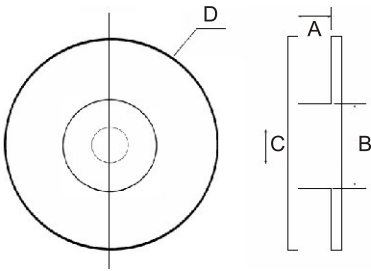
Parts No.	Inductance L0 (μ H) $\pm 20\%$ @0 IDC	DCR m Ω (max)	I _{rms} (A) Typ.	I _{sat} (A) Typ.
RP13350OM680N	0.68	1.5	30	39
RP13350OM1U	1	2	26	34
RP13350OM1U2	1.2	2.6	23	27
RP13350OM2U2	2.2	4.5	18	20
RP13350OM3U3	3.3	7	15	18
RP13350OM4U7	4.7	8.8	13	15

Notes:

1. Lo test parameters: 100KHz/ 0.25VDC.
2. Testing Instrument : L: HP4284A, CH11025, CH3302, CH1320, CH1320S LCR METER / Rdc: CH16502, Agilent33420A MICRO OHMMETER.
3. Heat Rated Current (I_{rms}) will cause the coil temperature rise approximately $\Delta T = 40^\circ\text{C}$ without core loss.
4. Saturation Current (I_{sat}) will cause L0 to drop approximately 20%
5. The part temperature (ambient + temp rise) should not exceed 125°C under worst case operating conditions. Circuit design, component, PCB trace size and thickness, airflow and other cooling provisions all affect the part temperature. Part temperature should be verified in the end application.

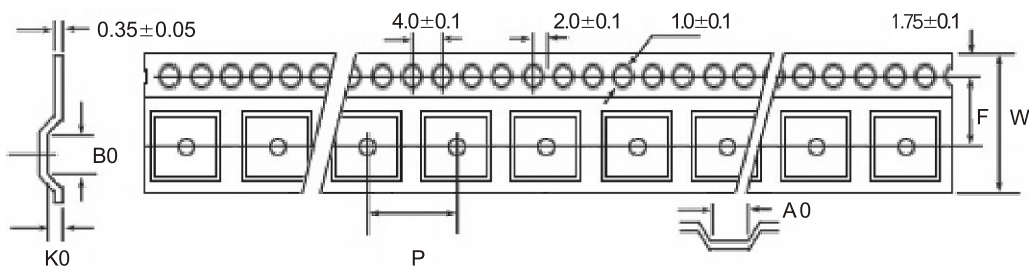
SMD POWER INDUCTORS

Series RP - 3 REEL DIMENSIONS



Type	A (min.)	B (min.)	C (min.)	D (min.)
13" X 24 mm	24±0.5	100±2.0	13.5±0.5	330

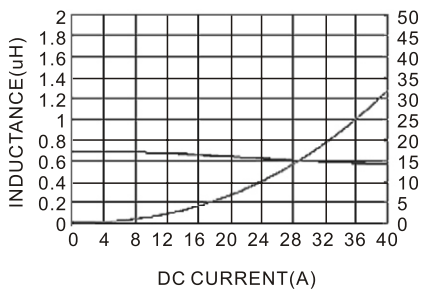
TAPE MATERIAL



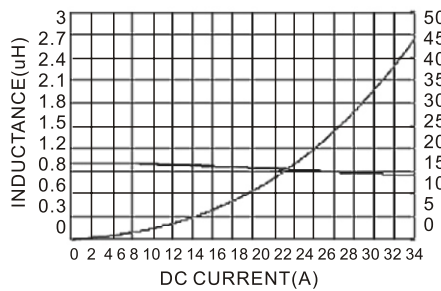
Type	B0 (mm)	A0 (mm)	K0 (mm)	P (mm)	W (mm)	F (mm)	t (mm)
RP13350	13.0±0.1	14.0±0.1	5.6±0.1	16.0±0.1	24±0.1	11.5±0.05	0.40±0.05

CURVE

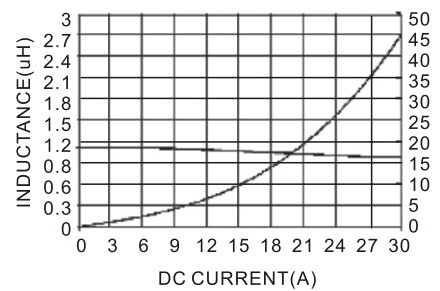
RP13350IM680N



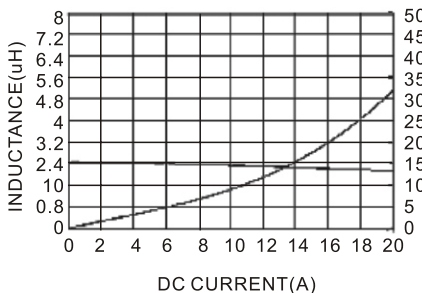
RP13350IM1U



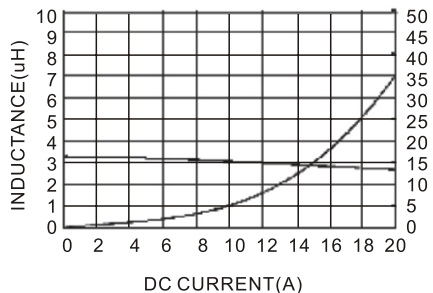
RP13350IM1U2



RP13350IM2U2



RP13350IM3U3



RP13350IM4U7

