

## SMD POWER INDUCTORS

### Series PT - I Shielded



#### FEATURES

- ◆ Low profile and square
- ◆ Magnetically shield and low DC resistance
- ◆ Suitable for large currents
- ◆ Excellent solderability and high heat resistance
- ◆ Low cost and packed in embossed carrier tape

#### APPLICATION

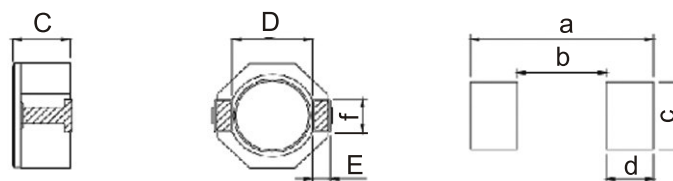
- ◆ LCD Monitor
- ◆ P.D.A
- ◆ Notebook PC
- ◆ Power supply for VTR
- ◆ Digital camera
- ◆ Small size communication equipment

#### PRODUCT IDENTIFICATION

**PT 80 I 30 I M 10U**  
**a b c d e f g**

- a : Type of products - SMD Power Inductors PT series.  
 b : Dimension(mm) - 80 : 8.0X8.0  
 c : Materials - I = I Type  
 d : Thickness(mm) - 30 = 3.0, 40 = 4.0, 45 = 4.5, 60 = 6.0  
 e : Packing - PCS/REEL - 1 = 1000, L = 3500  
 f : Tolerance - K :  $\pm 10\%$  M :  $\pm 20\%$   
 g : Inductance - 100N = 0.1uH, 10U = 10.0 uH, 1M2 = 1200uH

#### SHAPES & DIMENSIONS



DIMENSIONS (mm)  
 LAND PATTERN (mm)

Unit : mm

Type	A $\pm 0.3$	B $\pm 0.3$	C(max)	D(Ref)	E(Ref)	F(Ref)	a(Ref)	b(Ref)	c(Ref)	d(Ref)
PT80I30	8	8	3.0	6.3	1.2	2.5	10.1	6.1	2.8	2.0
PT80I40	8	8	4.0	6.3	1.2	2.5	10.1	6.1	2.8	2.0
PT80I45	8	8	4.5	6.3	1.2	2.5	10.1	6.1	2.8	2.0
PT80I60	8	8	6.0	6.3	1.2	2.5	10.1	6.1	2.8	2.0

## SMD POWER INDUCTORS

Series **PT - I** Shielded

### ELECTRICAL CHARACTERISTICS

TEST FREQUENCY 0.8uH ~ 8.2uH @ 100KHz / 0.25V

10uH ~ 10000uH @ 1KHz / 0.25V

Part Number	Inductance L ( $\mu$ H)	RDC ( $\Omega$ ) Max.	Rated DC Current (A) Min.
PT80I30L□2U	2	0.022	5.00
PT80I30L□2U5	2.5	0.024	4.50
PT80I30L□3U5	3.5	0.031	4.00
PT80I30L□4U7	4.7	0.040	3.40
PT80I30L□6U2	6.2	0.049	3.00
PT80I30L□7U3	7.3	0.060	2.80
PT80I30L□10U	10	0.079	2.50
PT80I30L□15U	15	0.109	1.90
PT80I30L□22U	22	0.157	1.60
PT80I30L□33U	33	0.205	1.30
PT80I30L□47U	47	0.310	1.15
PT80I30L□68U	68	0.430	0.92
PT80I30L□100U	100	0.560	0.75
PT80I40I□1U8	1.8	0.015	7.00
PT80I40I□2U5	2.5	0.017	6.50
PT80I40I□3U5	3.5	0.024	5.00
PT80I40I□4U7	4.7	0.029	4.60
PT80I40I□10U	10	0.048	3.00
PT80I40I□15U	15	0.067	2.75
PT80I40I□22U	22	0.105	2.30
PT80I40I□33U	33	0.157	1.75
PT80I40I□47U	47	0.189	1.52
PT80I40I□68U	68	0.290	1.30
PT80I40I□100U	100	0.410	1.05
PT80I45I□2U	2	0.022	7.00
PT80I45I□3U3	3.3	0.027	6.00
PT80I45I□3U9	3.9	0.030	4.50
PT80I45I□4U7	4.7	0.033	4.30
PT80I45I□6U2	6.2	0.036	4.00
PT80I45I□10U	10	0.059	3.08
PT80I45I□15U	15	0.083	2.24
PT80I45I□22U	22	0.118	2.00
PT80I45I□33U	33	0.160	1.50
PT80I45I□47U	47	0.230	1.33
PT80I45I□68U	68	0.280	1.12
PT80I45I□100U	100	0.440	0.91
PT80I60I□3U9	3.9	0.016	4.10
PT80I60I□5U	5	0.017	3.80
PT80I60I□6U2	6.2	0.020	3.20
PT80I60I□10U	10	0.026	2.60
PT80I60I□15U	15	0.037	2.30
PT80I60I□22U	22	0.046	1.70
PT80I60I□33U	33	0.065	1.50
PT80I60I□47U	47	0.091	1.20
PT80I60I□68U	68	0.130	1.00
PT80I60I□100U	100	0.180	0.80