

WIRE WOUND INDUCTORS

Low Profile

Series **LT - F** Lead free / Power Line



FEATURES

- ♦ Utilizing a miniaturized winding structure.
- ♦ These products provide low DC resistance and high current.
- ♦ This series is characteristic with its thin type structure.
- ♦ Low-profile series is used for customers' design.

APPLICATIONS

- ♦ Portable device such as PDA, mobile phone.
- ♦ Digital camera and other electronic equipment.

PRODUCT IDENTIFICATION

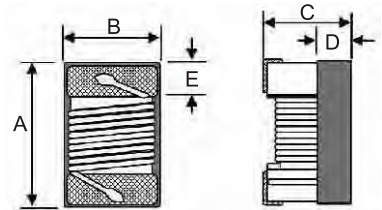
LT 08 F 05 2 J 180N
a b c d e f g

- a : Type of Products - SMD Wire wound inductors for Power Line
 b : Dimension - 08: 2.4mm Max. 12: 3.6mm Max.
 c : Materials - F - Design code
 d : Width - 05 : 78mm Max. 10 : 2.9mm Max.
 e : Packing - PCS/REEL - 2 = 2000, 4 = 4000, K = 2500
 f : Tolerance - J : ±5% K : ±10%
 g : Inductance - 1N2 = 0.0012 μH, 100N = 0.1 μH, 1U = 1.0 μH, 1U2 = 1.2 μH, 1M = 1000 μH, 1M2 = 1200 μH

SHAPES & DIMENSIONS

Type	Alias in inch	A Max.	B Max.	C Max.	D Ref.	E
LT08F05	0805	2.40	1.78	1.05	0.70	0.5±0.1
LT12F10	1210	3.60	2.90	1.25	0.70	0.5±0.1

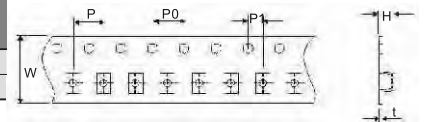
Unit : mm



TAPE DIMENSIONS

Type	Alias in inch	W	P	P0	P1	H	T
LT08F05	0805	8	4	4	2	NA	0.23
LT12F10	1210	8	4	4	2	NA	0.23

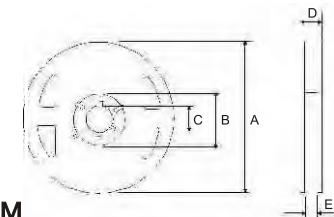
Dimensions in mm



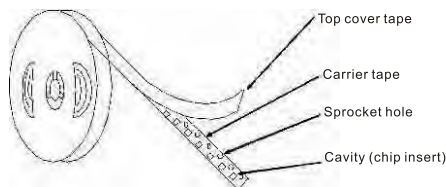
REEL DIMENSIONS

Type	Alias in inch	Q'TY/ REEL	A	B	C	D	E
LT08F05	0805	2000PCS	180	60	13	14.4	8.4
LT12F10	1210	2000PCS	180	60	13	14.4	8.4

Dimensions in mm

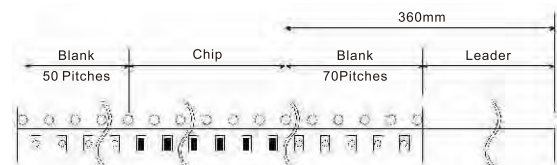


TAPPING FIGURE



PACKAGING FORM

There shall not continuation more than two vacancies of the product.



COVER TAPE PEEL STRENGTH

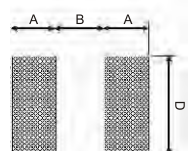
The force for tearing off cover tape is 0.1~0.6(N) in the arrow direction at the following conditions:
 Temperature : 5~35°C
 Humidity : 45~85%
 Atmospheric pressure : 860~1060 hpa



RECOMMENDED PATTERN

Type	Alias in inch	A	B	C
LT08F05	0805	1.02	0.76	1.78
LT12F10	1210	1.2	2.0	2.7

Unit : mm



WIRE WOUND INDUCTORS Low Profile

Series **LT - F** Lead free / Power Line **ELECTRICAL CHARACTERISTICS** **LT08F05**

Part Number	L (μH) /Mhz	Inductance Tolerance	Q /Mhz Min.	SRF (MHz) Min.	DCR (Ω) Max.	Irms Max. (mA)	Color Coding
LT08F052□1U	1.0/7.9	J,K	19/7.9	470	0.85	1020	Black
LT08F052□1U2	1.2/7.9	J,K	18/7.9	430	0.95	1000	Brown
LT08F052□1U5	1.5/7.9	J,K	17/7.9	385	1.06	980	Red
LT08F052□1U8	1.8/7.9	J,K	19/7.9	350	1.15	900	Orange
LT08F052□2U2	2.2/7.9	J,K	17/7.9	270	1.26	860	Yellow
LT08F052□2U7	2.7/7.9	J,K	19/7.9	230	1.4	840	Green
LT08F052□3U3	3.3/7.9	J,K	19/7.9	185	1.55	800	Blue
LT08F052□3U9	3.9/7.9	J,K	19/7.9	180	1.68	760	Violet
LT08F052□4U7	4.7/7.9	J,K	20/7.9	160	1.85	700	Gray
LT08F052□5U6	5.6/7.9	J,K	17/7.9	110	2.1	660	White
LT08F052□6U8	6.8/7.9	J,K	16/7.9	45	2.2	620	Black
LT08F052□8U2	8.2/7.9	J,K	17/7.9	36	2.45	580	Brown
LT08F052□10U	10/2.5	J,K	10/2.5	36	2.62	580	Red
LT08F052□12U	12/2.5	J,K	10/2.5	33	2.95	500	Orange
LT08F052□15U	15/2.5	J,K	10/2.5	31	5.2	400	Yellow
LT08F052□18U	18/2.5	J,K	10/2.5	23	5.7	380	Green
LT08F052□22U	22/2.5	J,K	10/2.5	21	8.3	320	Blue
LT08F052□27U	27/2.5	J,K	10/2.5	19	10	280	Violet
LT08F052□33U	33/2.5	J,K	10/2.5	17	14	250	Gray
LT08F052□39U	39/2.5	J,K	10/2.5	13	18.5	220	White

1. When ordering, please specify tolerance codes. Ex: LT08F052□1U

Tolerance : J = ± 5%, K = ± 10%

Packaging : Clear tape and reel { standard }. *

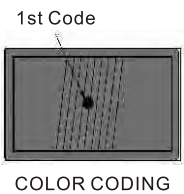
2.L/Q : Agilent/HP E4991A+ Agilent/HP16197A

3.SRF : Agilent/HP E4991A+ Agilent/HP 16197A

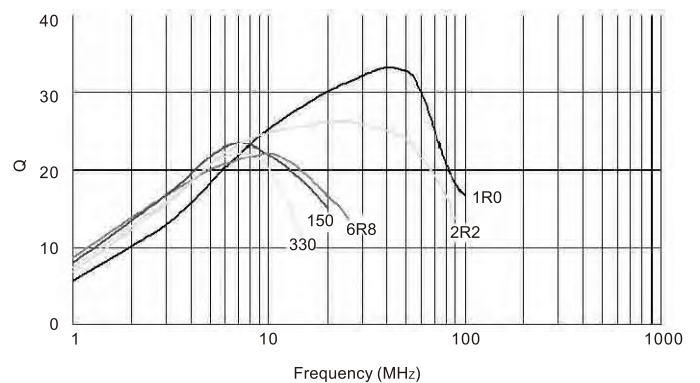
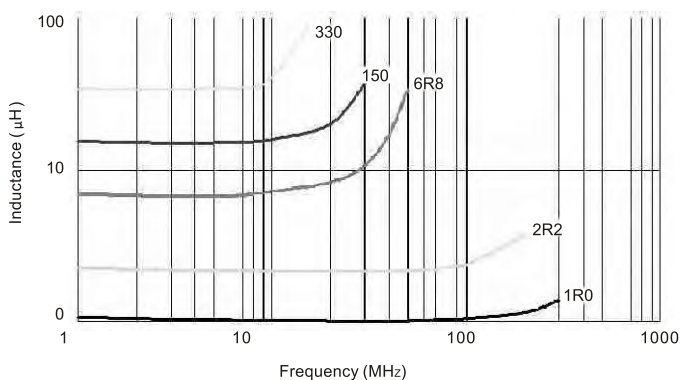
4.RDC : DIGITAL MILLIOHM METER Chroma 16502, or equivalent.

5.Idc for Inductance drop 10% from its value without current.

6. Operating temperature range from -25°C to 85°C.



CURVE



WIRE WOUND INDUCTORS Low Profile

Series **LT - F** Lead free / Power Line **ELECTRICAL CHARACTERISTICS** **LT12F10**

Part Number	L (μH) /MHz	Inductance Tolerance	Q/MHz Min.	SRF(MHz) Min.	DCR (Ω) Max.	I _{rms} Typ. (mA)	Color Coding		
							1st	2nd	3rd
LT12F102□1U	1.0 / 2.5	J,K	16 / 2.5	350	0.25	2400	Brown	Black	Red
LT12F102□2U2	2.2 / 2.5	J,K	16 / 2.5	260	0.45	1600	Red	Red	Red
LT12F102□3U3	3.3 / 2.5	J,K	16 / 2.5	160	0.68	1380	Orange	Orange	Red
LT12F102□4U7	4.7 / 2.5	J,K	16 / 2.5	100	0.84	1140	Yellow	Violet	Red
LT12F102□5U6	5.6 / 2.5	J,K	16 / 2.5	90	0.93	1060	Green	Blue	Red
LT12F102□6U8	6.8 / 2.5	J,K	16 / 2.5	76	1.07	1000	Blue	Gray	Red
LT12F102□8U2	8.2 / 2.5	J,K	16 / 2.5	72	1.13	860	Gray	Red	Red
LT12F102□10U	10 / 2.5	J,K	16 / 2.5	64	1.28	840	Brown	Black	Orange
LT12F102□15U	15 / 1.0	J,K	10 / 1.0	30	2.13	660	Brown	Green	Orange
LT12F102□22U	22 / 1.0	J,K	10 / 1.0	18	2.6	580	Red	Red	Orange
LT12F102□33U	33 / 1.0	J,K	10 / 1.0	11	3.45	460	Orange	Orange	Orange
LT12F102□47U	47 / 1.0	J,K	10 / 1.0	10	5.58	380	Yellow	Violet	Orange

1. When ordering, please specify tolerance codes. Ex: LT12F102□1U

Tolerance : J = ±5% , K = ±10%

Packaging : Clear tape and reel { standard }. *

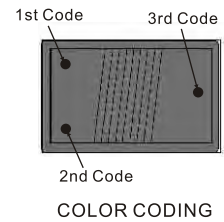
2.L/Q : Agilent/HP E4991A+ Agilent/HP16197A

3.SRF : Agilent/HP E4991A+ Agilent/HP 16197A

4.RDC : DIGITAL MILLIOHM METER Chroma 16502, or equivalent.

5.Idc for Inductance drop 10% from its value without current.

6. Operating temperature range from -25°C ~ 85°C



CURVE

