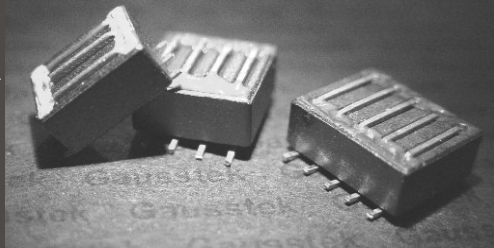


SMD EMI FERRITE BEADS

Series LB



OUTLINE

- ♦ Gausstek's EMI LB Beads provide a powerful means of EMI/RFI attenuation for electronic equipment.
- ♦ Multiple single turn printed circuit beads or multi-turn printed circuit beads are available in three sizes with material.
- ♦ These beads are supplied with tinned copper jumper wire which complete the desired winding configuration on the printed circuit boards.

FEATURES

- ♦ Jump wires are oxygen free high conductivity copper with 95/5 tin/lead coating.
- ♦ Compact and high performance.

APPLICATIONS

- ♦ The PC Beads mainly used in the PC board of personal computers & relative device to filter the EMI from the outside.

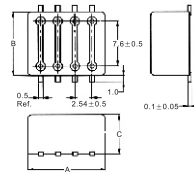
PRODUCT IDENTIFICATION

LB 08 X 04 X X 65R
a b c d e f g

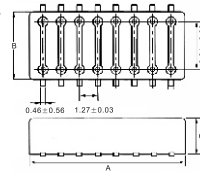
- a : Type of Products - SMD EMI Beads
- b : Dimension(mm) - 08 : 8.34X10.88 10 : 10.88X10.88 11 : 11X5
 12 : 11.43X4.5 13 : 13.42X10.88
- c : Materials - X - No Use Z - Z Type
- d : Thickness - 04 = 3.81mm 05 = 5.06mm (5.0+0 For material Type Z)
 06 = 6.35mm 07 = 7.62mm 08 = 8.09 45 = 4.5
- e : Packing - X = Any Quantity
- f : Tolerance - X : Min. S : ±25%
- g : Inductance - 65R = 65Ω

SHAPES & DIMENSIONS

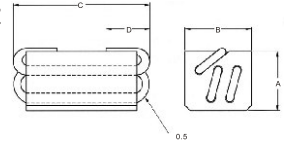
LB08 , LB10 , LB13



LB12



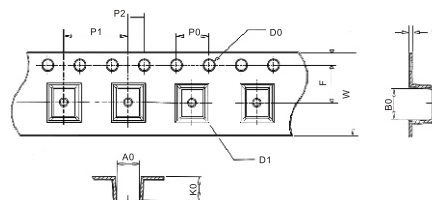
LB11Z



ELECTRICAL CHARACTERISTICS

Part Number	Impedance (Ω) @ 100MHz	Dimension in mm				Tolerance %	RDC (Ω) Max.
		A±0.25	B±0.25	C	D		
LB08X04XX65R	65 -0	8.34	10.88	3.81	--	--	--
LB08X05XX100R	100 -0	8.34	10.88	5.08	--	--	--
LB08X06XX120R	120 -0	8.34	10.88	6.35	--	--	--
LB08X07XX155R	155 -0	8.34	10.88	7.62	--	--	--
LB08X08XX170R	170 -0	8.34	10.88	8.09	--	--	--
LB08X10XX270R	270 -0	8.34	10.88	10.15	--	--	--
LB10X04XX65R	65 -0	10.88	10.88	3.81	--	--	--
LB10X05XX100R	100 -0	10.88	10.88	5.08	--	--	--
LB10X06XX120R	120 -0	10.88	10.88	6.35	--	--	--
LB10X07XX155R	155 -0	10.88	10.88	7.62	--	--	--
LB10X08XX170R	170 -0	10.88	10.88	8.09	--	--	--
LB10X08XX270R	270 -0	10.88	10.88	10.15	--	--	--
LB13X04XX65R	65 -0	13.42	10.88	3.81	--	--	--
LB13X05XX100R	100 -0	13.42	10.88	5.08	--	--	--
LB13X06XX120R	120 -0	13.42	10.88	6.35	--	--	--
LB13X07XX155R	155 -0	13.42	10.88	7.62	--	--	--
LB13X08XX170R	170 -0	13.42	10.88	8.09	--	--	--
LB13X08XX270R	270 -0	13.42	10.88	10.15	--	--	--
LB12X45X80R	80 -0	11.43	4.5±0.13	4.19±0.13	--	--	0.010
LB11Z05XS340R	340+0 Ω at 25MHz / 600±25% Ω at 100MHz	11.0+0	5±0.2	5+0	2-0	25	0.0075

PACKAGING



Mark	W	P1	E	F	D0	D1	P0	P2	A0	B0	K0	T
DIM	24±0.3	8±0.1	1.75±0.1	11.5±0.1	1.55±0.05	1.55±0.05	4±0.1	2±0.1	5.3±0.1	10.9±0.1	5.1±0.1	0.35±0.05

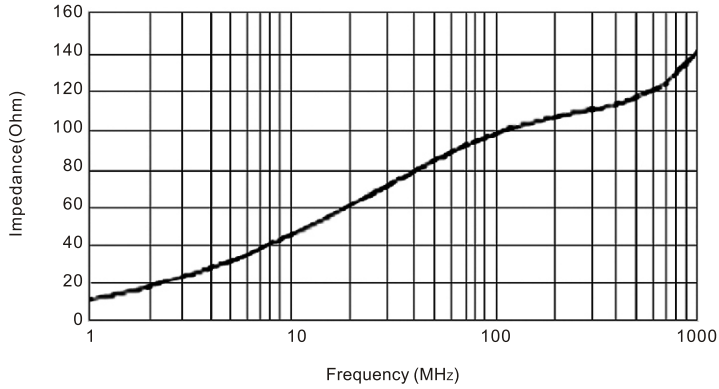
Unit : mm

SMD EMI FERRITE BEADS

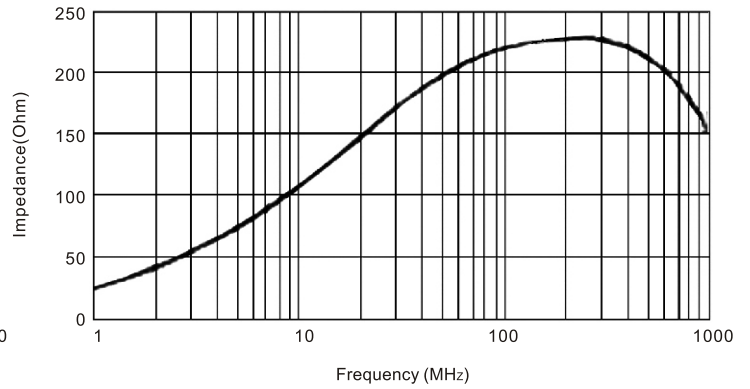
Series LB CURVES

Test Instruments : HP4291A Impedance / Material Analyzer

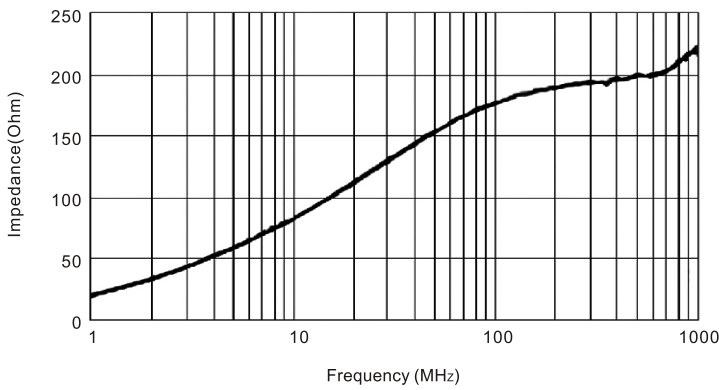
LB08X04XX65R



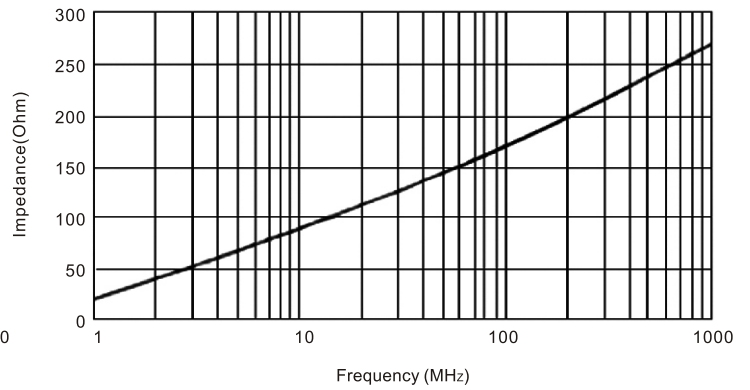
LB10X07XX155R



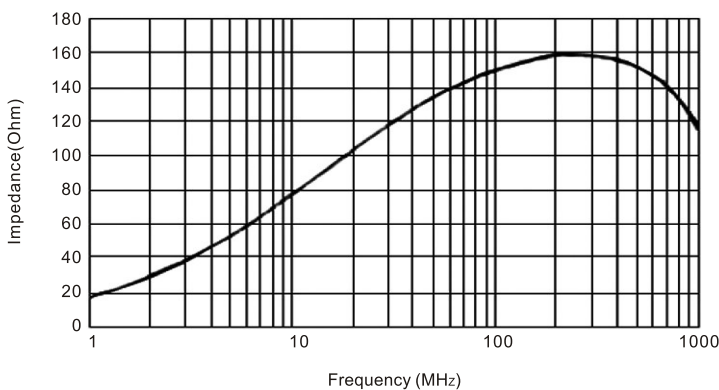
LB08X06XX120R



LB13X06XX120R



LB10X05XX100R



LB13X08XX170R

