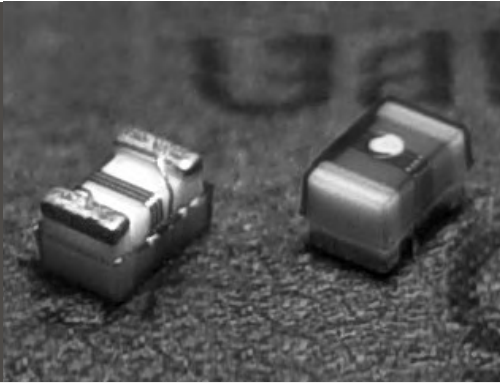


WIRE WOUND INDUCTORS

Lead free / Signal Line

Series HQ - C

Lead free / RF Signals



FEATURES

- Especially high Q factor in this series for customers' design.
- Resin-coated surface enables excellent mounting.
- Low DC resistance design is ideal for low loss, high output and low power consumption.

APPLICATIONS

- For high-frequency applications including mobile phones, portable phones, such as PA, ANT, VCO, SAW, etc.
- Mobile phones such as GSM, CDMA, PDC, etc.
- Bluetooth, W-LAN

PRODUCT IDENTIFICATION

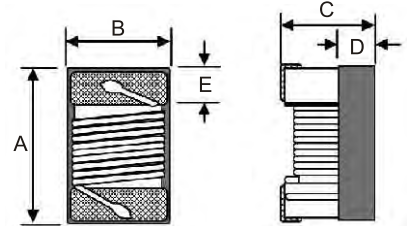
HQ 08 C 05 2 J 1U
a b c d e f g

- a : Type of Products - SMD Wire wound inductors for Signal line
 b : Length - 08=2.4mm Max. 10=2.9mm Max.
 c : Materials - C - Design Code
 d : Width - 05=1.65mm Max. 08=2.54mm Max.
 e : Packing - PCS/REEL - 2 = 2000, 4 = 4000, K = 2500
 f : Tolerance - G : ±2% J : ±5% K : ±10%
 g : Inductance - 1N2 = 0.0012 μH, 100N = 0.1 μH, 1U = 1.0 μH, 1U2 = 1.2 μH, 1M = 1000 μH, 1M2 = 1200 μH

SHAPES & DIMENSIONS

Unit : mm

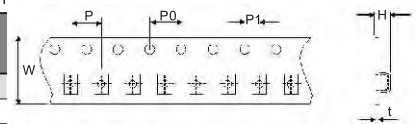
Type	Alias in inch	A Max.	B Max.	C Max.	D Ref.	E Ref.
HQ08C05	0805	2.40	1.65	1.45	0.65	0.44
HQ10C08	1008	2.90	2.54	2.03	1.30	0.45±0.1



TAPE DIMENSIONS

Dimensions in mm

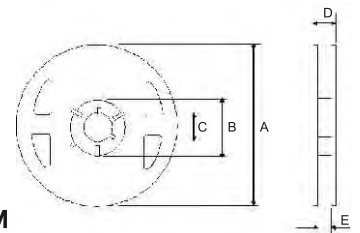
Type	W	P	P0	P1	H	T
HQ08C05	8	4	4	2	NA	0.23
HQ10C08	8	4	4	2	NA	0.23



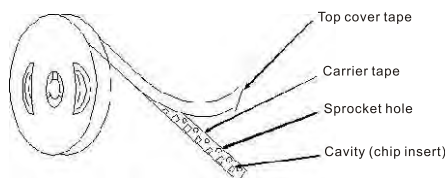
REEL DIMENSIONS

Dimensions in mm

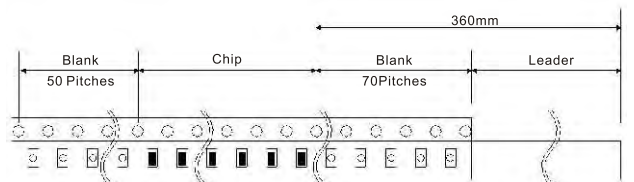
Type	Q'TY/ REEL	A	B	C	D	E
HQ08C05	2000PCS	180	60	13	14.4	8.4
HQ10C08	2000PCS	180	60	13	14.4	8.4



TAPPING FIGURE



PACKAGING FORM



COVER TAPE PEEL STRENGTH

The force for tearing off cover tape is 0.1~0.6(N) in the arrow direction at the following conditions:
 Temperature : 5~35°C
 Humidity : 45~85%
 Atmospheric pressure : 860~1060 hpa



RECOMMENDED PATTERN

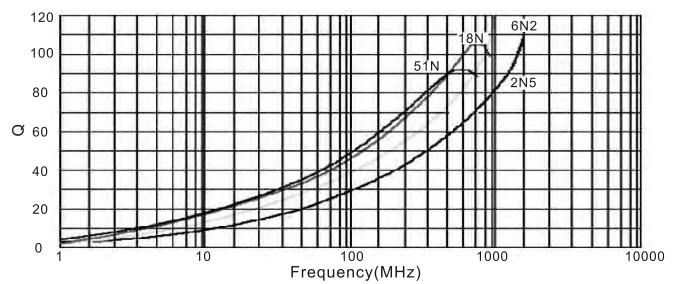
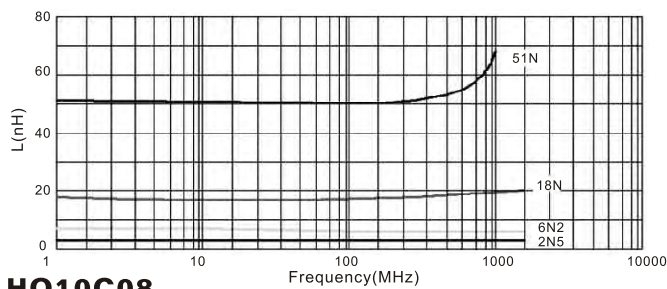
Unit : mm

Type	Alias in inch	A	B	C
HQ08C05	0805	1.02	0.76	1.78
HQ10C08	1008	10.20	1.27	2.54

WIRE WOUND INDUCTORS HIGH Q

Series HQ - C Lead free / Signal Line ELECTRICAL CHARACTERISTICS HQ08C05

Part Number	Inductance (nH)/MHz	Inductance Tolerance	Q/MHz Min.	SRF (Min.)	DCR (Ω) Max.	I _{rms} (mA) Max.	Color Coding
HQ08C052□2N5	2.5/250	J,K	80/1500	>6000	0.020	1600	Black
HQ08C052□5N6	5.6/250	J,K	98/1500	>6000	0.035	1600	Brown
HQ08C052□6N2	6.2/250	J,K	88/1000	4750	0.035	1600	Red
HQ08C052□12N	12/250	G,J,K	80/1000	3000	0.045	1600	Orange
HQ08C052□16N	16/250	G,J,K	72/500	2950	0.060	1500	Yellow
HQ08C052□18N	18/250	G,J,K	75/500	2550	0.060	1400	Green
HQ08C052□20N	20/250	G,J,K	70/500	2050	0.065	1400	Blue
HQ08C052□27N	27/250	G,J,K	75/500	2000	0.070	1300	Violet
HQ08C052□30N	30/250	G,J,K	65/500	1950	0.095	1200	Gray
HQ08C052□39N	39/250	G,J,K	65/500	1600	0.100	1100	White
HQ08C052□48N	48/200	G,J,K	65/500	1400	0.100	1200	Black
HQ08C052□51N	51/200	G,J,K	65/500	1400	0.120	1000	Brown



HQ10C08

Part Number	Inductance (nH)/MHz	Inductance Tolerance	Q/MHz Min.	SRF (Min.) (MHz)	DCR (Ω) Max.	I _{rms} Max. (mA)	Color Coding		
							1st	2nd	3rd
HQ10C082□4N1	4.1/50	J,K	75/1500	6000	0.05	1600	Black	Yellow	Black
HQ10C082□10N	10/50	J,K	60/500	3600	0.06	1600	Brown	Black	Black
HQ10C082□12N	12/50	J,K	60/500	2800	0.06	1500	Brown	Red	Black
HQ10C082□18N	18/50	J,K,G	62/350	2700	0.07	1400	Brown	Gray	Black
HQ10C082□22N	22/50	J,K,G	62/350	2050	0.07	1400	Red	Red	Black
HQ10C082□33N	33/50	J,K,G	75/350	1700	0.09	1300	Orange	Orange	Black
HQ10C082□39N	39/50	J,K,G	75/350	1300	0.09	1300	Orange	White	Black
HQ10C082□47N	47/50	J,K,G	75/350	1450	0.12	1200	Yellow	Violet	Black
HQ10C082□56N	56/50	J,K,G	75/350	1200	0.12	1200	Green	Blue	Black
HQ10C082□68N	68/50	J,K,G	80/350	1150	0.13	1100	Blue	Gray	Black
HQ10C082□82N	82/50	J,K,G	80/350	1060	0.16	1100	Gray	Red	Black
HQ10C082□100N	100/50	J,K,G	62/350	1000	0.18	1000	Brown	Black	Brown
HQ10C082□120N	120/25	J,K,G	50/100	870	0.18	1000	Brown	Red	Brown
HQ10C082□150N	150/25	J,K,G	50/100	850	0.23	1000	Brown	Green	Brown
HQ10C082□220N	220/25	J,K,G	50/100	750	0.35	1000	Red	Red	Brown
HQ10C082□270N	270/25	J,K,G	48/100	630	0.40	900	Red	Violet	Brown
HQ10C082□330N	330/25	J,K,G	48/100	570	0.47	900	Orange	Orange	Brown
HQ10C082□390N	390/25	J,K,G	48/100	500	0.62	900	Orange	White	Brown

Test Instruments:

1. When ordering, please specify tolerance codes. Ex: HQ10C082□120N

Tolerance : G = $\pm 2\%$, J = $\pm 5\%$, K = $\pm 10\%$ Packaging : Clear tape and reel { standard }

2. L / Q : Agilent/HP E4991A+ Agilent/HP16197A

3. SRF : Agilent/HP8753D / Agilent/HP E4991A

4. RDC : DIGITAL MILLIOHM METER Chroma 16502, or equivalent

5. I_{rms} for a 15°C rise above 25°C ambient

6. Operating temperature range from -40°C ~ 125°C

