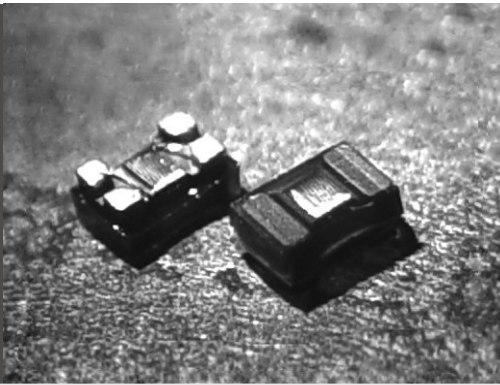


# COMMON MODE SMD FILTER FOR SIGNAL LINE

## Series CM - U



### FEATURES

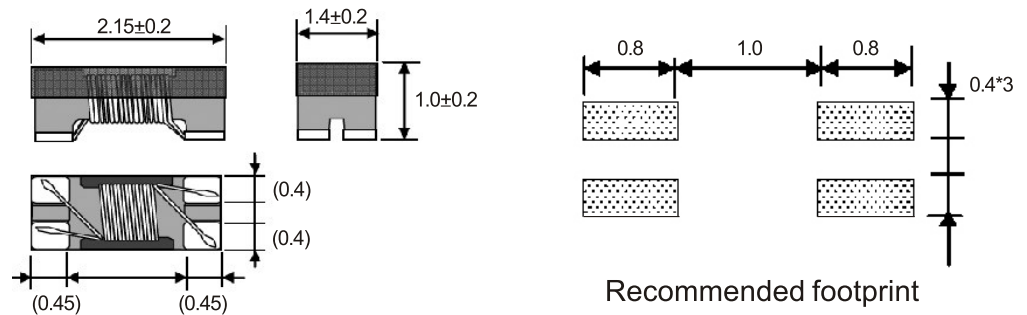
- ◆ This common mode filter is characterized by its small sized
- ◆ Highly effective in noise suppression. High common-mode impedance at noise band and low differential-mode impedance at signal band.
- ◆ Due to the low differential-mode impedance with high coupling factor, there is almost no distortion on high speed signal.
- ◆ This series is micro-produced by auto machines for its huge productivity and accuracy with all-day CCD inspection.
- ◆ Large energy storage capability.
- ◆ Flexibility for Customer Specification Design

### PRODUCT IDENTIFICATION

**CM** **20** **U** **12** **2** **S** **90R**  
**a** **b** **c** **d** **e** **f** **g**

- a : Type of products - SMD Common mode Filter  
 b : Dimension(mm) - 20 =  $2.15 \pm 0.2 \times 1.4 \pm 0.2$   
 c : Materials - UV Coating  
 d : Thickness(mm) - 12 : 1.2 Max.  
 e : Packing (PCS / REEL) - 2 = 2,000  
 f : Tolerance - S :  $\pm 25\%$   
 g : Inductance - 90R = 90 Ohm

### SHAPES & DIMENSIONS



### ELECTRICAL CHARACTERISTICS

Part Number	Common mode Impedance Z(Ω) at 100MHz + -25%	RDC (Ω)	IDC (mA)	VDC (V)	Withstanding VDC	Insulation Resistance (MΩ) Min.
CM20U122S67R	67	0.35	330	50	125.00	10
CM20U122S90R	90	0.35	330	50	125.00	10
CM20U122S120R	120	0.45	280	50	125.00	10
CM20U122S180R	180	0.50	250	50	125.00	10

**COMMON MODE SMD FILTER FOR SIGNAL LINE**

**Series CM - U  
CURVES**

